

2nd edition of melasma care

Whitening, Anti-wrinkle care

MARCHEN

Bye:mela

Shining Ampoule

“Blow your worries about melasma away”



MARCHEN BYEMELA SHINING AMPOULE

Whitening, Anti-wrinkle care

Skin care cosmetic, All skin types

- ✓ Marchen Byemela Shining Ampoule is a product helping to brighten skin and to smooth wrinkles.
- ✓ It also makes skin glow and luminous.

[Volume] 30ml

[Description] With a suitable amount, evenly apply it on skin.

Container



Bottle with Dispenser

Scent



Delicate Lavender

Color



Light ivory

Texture



Soft and moist

Benefits and Effectiveness

1

Whitening, Anti-wrinkle care

Niacinamide and Adenosine announced by Ministry of Food and Drug Safety will help to brighten skin and to improve wrinkles.

2

Anti-blemish solution

Patented ingredients improves blemishes which aren't easily invisible as well.

3

Radiant skin

This ampoule helps to make skin much brighter than before.



MAIN INGREDIENTS

It makes skin visibly revitalized and moisturized with a more beautiful tone.

[Ingredients **brightening and moisturizing** skin contained]

Solanum
Lycopersicum
(Tomato) Callus
Culture Extract

Alpha-
Arbutin

Sodium Palmitoyl
Proline,
Nymphaea Alba
Flower Extract

Tranexamic
Acid

Patented
combination of
peptides

Ipomoea
Hederacea Callus
Culture Extract

Blue Complex

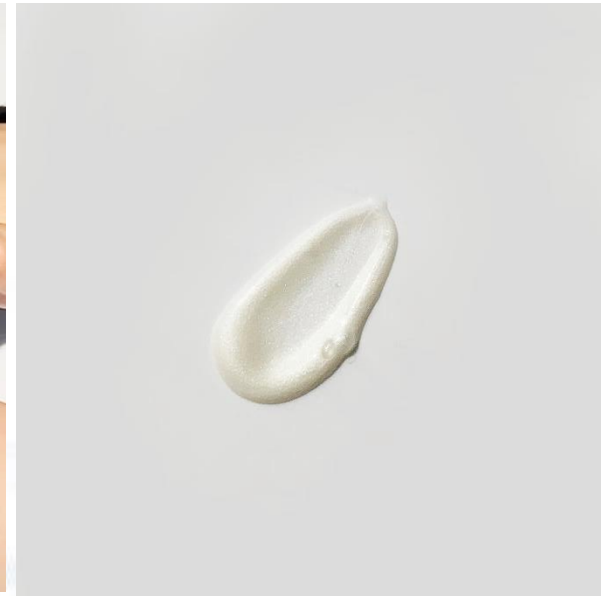


TEXTURE

Ivory ampoule with delicate lavender scent is naturally absorbed into skin.



[This image shows that ampoule is smoothly applied on skin.]



[Formula]

BEFORE-AND-AFTER PHOTOS

It is smoothly applied and makes skin luminous.



[You can easily compare with the before-and-after photos above.]



[Skin becomes bright and luminous after using Byemela Ampoule.]

CLINICAL TEST COMPLETED

A Byemela Shining Ampoule improving melisma and wrinkles was clinically tested.

KC Skin Research Center/20persons/after 4weeks/individually different

- ✔ **Skin irritation test**
18th Mar. 2020~20th Mar. 2020
- ✔ **Improving skin tone**
9th Mar. 2020~7th April 2020
- ✔ **Reducing distribution of melasma and imperfections**
9th Mar. 2020~7th April 2020
- ✔ **Reducing melasma which isn't easily invisible as well**
9th Mar. 2020~7th April 2020
- ✔ **Reducing the area which has melasma**
9th Mar. 2020~7th April 2020
- ✔ **The number of melisma decreased**
9th Mar. 2020~7th April 2020
- ✔ **Getting skin supple**
9th Mar. 2020~7th April 2020
- ✔ **Moisturizing skin**
9th Mar. 2020~7th April 2020



Distribution chart of melisma and imperfections (Janus1Mark II, Polarized light)

42year-old
woman



Ampoule applied on skin



4 weeks after use

KC Skin Research Center/9th Mar. 2020~7th April 2020/20persons/after 4weeks/individually different

Melasma on skin (Janus1Mark II, UV light)

42year-old woman



Ampoule applied on skin

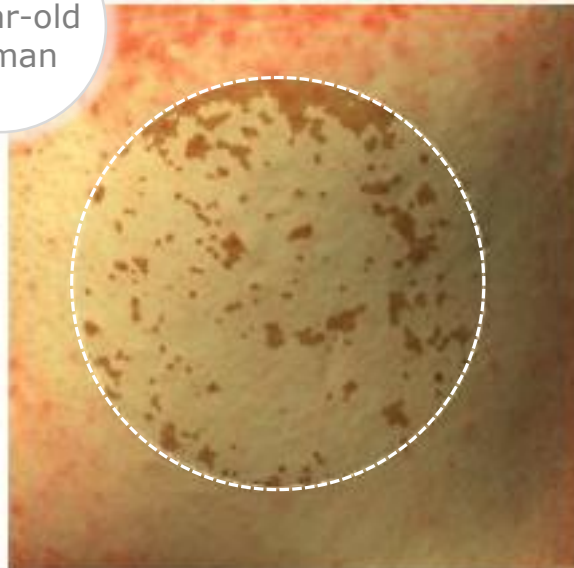


4 weeks after use

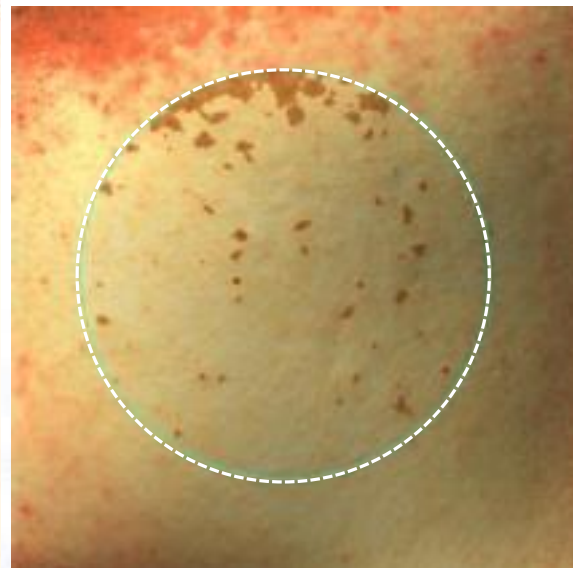
KC Skin Research Center/9th Mar. 2020~7th April 2020/20persons/after 4weeks/individually different

An area which has melasma
(Antera 3D)

43year-old
woman



Ampoule applied on skin

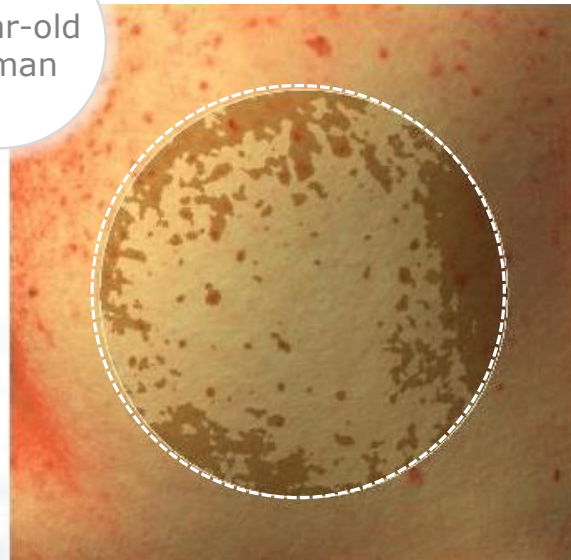


4 weeks after use

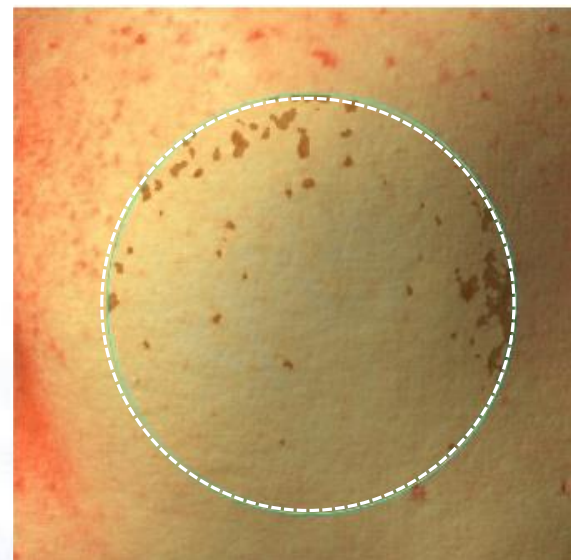
KC Skin Research Center/9th Mar. 2020~7th April 2020/20persons/
after 4weeks/individually different

An area which has melasma
(Antera 3D)

33year-old
woman



Ampoule applied on skin



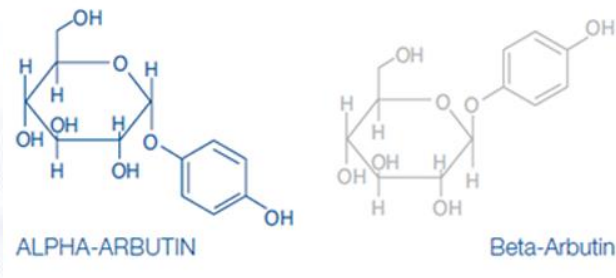
4 weeks after use

KC Skin Research Center/9th Mar. 2020~7th April 2020/20persons/
after 4weeks/individually different

BYEMELA SHINING AMPOULE'S INGREDIENTS

ALPHA-ARBUTIN

Alpha-arbutin is one of ingredients which shows strong effects improving skin tone and is generally used by well-known brands. It helps to boost it's benefits with Niacinamide.



[Structure of Alpha-Arbutin]



[Human Melanocytes Control]



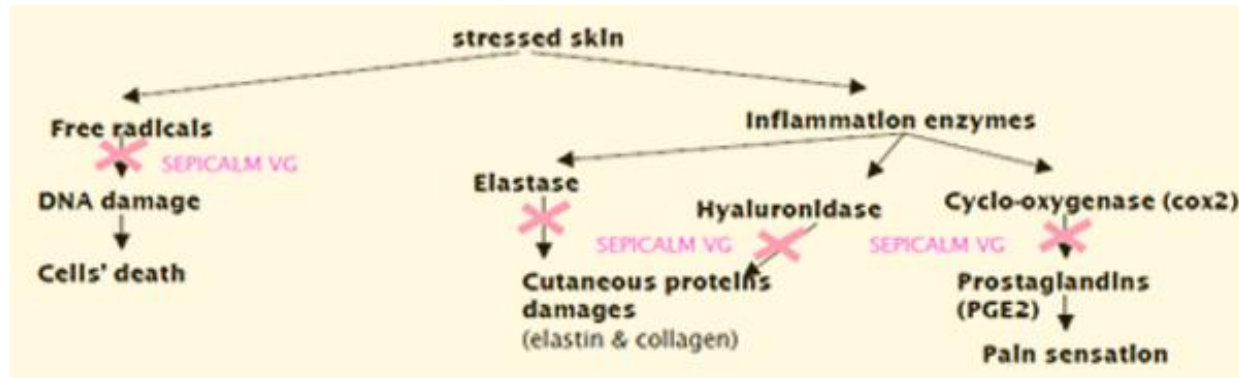
[Human Melanocytes with Alpha-Arbutin after 14 days]

BYEMELA SHINING AMPOULE'S INGREDIENTS

SODIUM PALMITOYL PROLINE, *Nymphaea Alba* Flower Extract

A country where is patented from: USA, EU, France

Restrained pigmentation caused by factors irritating skin



It is a super active ingredient which helps to inhibit melanin. This effect can be promptly seen within just 7 days. And it is effective for keeping skin cool in heat of sun light.

※ The very efficiency corresponds to the efficiency and effectiveness of the raw material itself.

BYEMELA SHINING APMPOULE'S INGREDIENTS

TRANEXAMIC ACID



Tranexamic Acid Diminishes Laser-Induced Melanogenesis
 →(번역) 트라넥사믹애씨드가 햇빛에 노출되어 생성된 멜라닌을 약화시킵니다.

A clinical study showed that Tranexamic Acid is very effective for improving melasma.

A study on Tranexamic Acid, treating melasma in a paper

※ The very efficiency corresponds to the efficiency and effectiveness of the raw material itself.

BYEMELA SHINING APMPOULE'S INGREDIENTS

BLUE COMPLEX

A country where is patented from: Republic of Korea



보리지추출물



캐모마일꽃/입추출물



수레국화추출물



리벤더수



히아신스 추출물



클라리 추출물

The ingredient helping to give hydration to skin and to calm it down contains Borago Officinalis, Centaurea Cyanus Flower, Lavandula Angustifolia (Lavender), Chamomilla Recutita (Matricaria), Hyacinthus Orientalis, Salvia Sclarea (Clary)'s distillate. It helps to prevent aging by improving dryness, lack of elasticity and roughness.

※ The very efficiency corresponds to the efficiency and effectiveness of the raw material itself.

BYEMELA SHINING APMPOULE'S INGREDIENTS

IPOMOEA HEDERACEA CALLUS CULYUTE EXTRACT

A country where is patented from: Republic of Korea



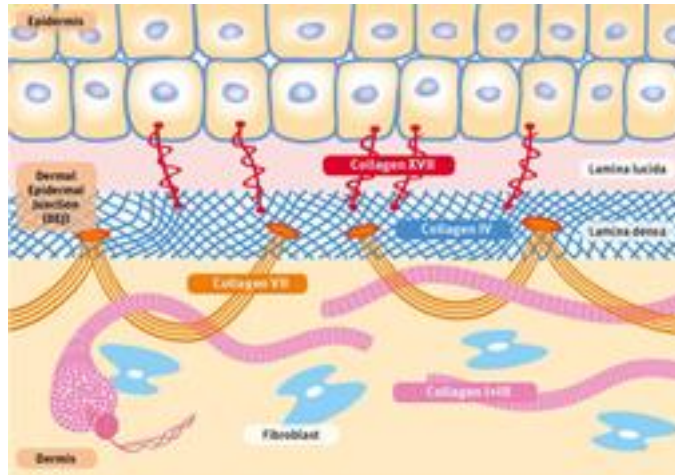
Extract of Pharbitis nil for brightening skin is being consistently developed. it is 4 times more effective than Kojic acid. On the other hand, it is 20 times way more effective than Arbutin. Extract of Pharbitis nil is a newly emerging material making skin radiant nowadays.

※ The very efficiency corresponds to the efficiency and effectiveness of the raw material itself.

BYEMELA SHINING APMPOULE'S INGREDIENTS

Total Collagen Booster

A country where is patented from: Republic of Korea, USA, EU, Japan



Main peptides which consist of skin layers help to synthesize 5 kinds of collagen and they make skin smooth and supple.

※ The very efficiency corresponds to the efficiency and effectiveness of the raw material itself.

BYEMELA SHINING APMPOULE'S INGREDIENTS

Solanum Lycopersicum (Tomato) Callus Culture Extract

A country where is patented from: Republic of Korea



Composition for cosmetic application containing Solanum Lycopersicum (Tomato) Callus Culture Extract(Patent no.: 10-1107925)

A tomato contains Carotenoid, 'Lycopene'.

It is an antioxidant ingredient which brightens, clams and regenerates skin.

※ The very efficiency corresponds to the efficiency and effectiveness of the raw material itself.

MARCHEN

MARCHEN BYEMELA SHINING AMPOULE

HOW TO USE

DESCRIPTION

- Evenly apply this ampoule on area which has pigmentation or wrinkles. And you can freely use it day or night.



BEAUTY TIP! – DUO CARE

If you use this ampoule with Byemela Spot Patch, you can experience way more effectiveness improving melasma.

Day & Night

아침, 저녁 매일 사용하세요!



메르헨 바이멜라 샤이닝 앰플 30 ml

Night

스페셜 케어 제품으로 매일 저녁에 사용하세요!



메르헨 바이멜라 스팟 패치 30 ml

- 저녁 세안 후 피부고민이 있는 부위에 사용 하시고 다음 단계에 메르헨 바이멜라 샤이닝 앰플로 관리해주세요!

MARCHEN

Thank you!



Cnkcsmmedical Co., Ltd. 124, Aenggogae-ro 556beon-gil, Namdong-gu, Incheon, Republic of Korea
Tel.: 032-819-2635, Fax. 032-811-2635, E-mail: cnkcsm@naver.com

Copyrights@Cnkcsmmedical Co., Ltd. All Rights Reserved